

PRODUCT BROCHURE

**DIVE INTO THE WORLD OF INNOVATIVE
SAFETY SYSTEMS**

Table of Contents



Complete Solutions – Safety Systems

Collection systems for oil	6
AuRü-L - Premium	7
AuRü-OP/LC - Basic	8
Collection systems for glycol	9
AuRü-W - Premium	10
AuRü-GP - Basic	10
Collection systems for oil and glycol	11
AuRü-LW - Premium	
AuRü-OGP - Basic	



Components / Accessories

Sensor Technology	12
Glycol-Scanner	13
Glycol-Sensor	14
Glycol-Sensor-Contact	14
Pressure-Sensor	15
Propane Protector	15
Connection Technology	16-17
AuRü-NWL - No water level	



Components / Accessories

Retrofits	18-19
Heating Technologies	20-21
Support solutions for HVAC	22
Big Foot	23
Standard Frame	24
Rubber base	25
Acoustic Housing	26-27



Legal Compliance

28-31

Who we are

We, GS Gesellschaft für Umweltschutz mbH, are a manufacturer of safety and retention systems for substances hazardous to water. Since joining the Aspen Pumps Group in June 2025, our customers have benefited from an expanded portfolio and additional system solutions within a strong corporate group.

Our brand – AuRü – has become a well-established name associated with premium quality and reliability, under which our customers also know us. The products we distribute under this name demonstrate outstanding technical maturity, high quality standards, and extensive engineering expertise.

Product Development

Initially, the company produced simple safety and retention systems for substances hazardous to water. Over the years, these systems have been continuously further developed in order to meet the increasing demands of operators and evolving legal requirements. The company has always placed great importance on introducing products to the market only after extensive testing and comprehensive quality inspections. Our customers are right to trust in our products and safety solutions – and this commitment is what defines us.

Identification

Our products and services are not only the hallmark of our company, but above all the result of the daily dedication and contribution of every single employee. We are a team – a family – in short: **We are AuRü.**



Operational safety

AuRü stands for many things – but not for stagnation. Our development department is continuously exploring new innovations and upgrades for our product series, ensuring that you always operate with the highest level of safety and the most reliable system available.



Planning Reliability

Highly qualified employees and the use of state-of-the-art manufacturing technologies ensure products of the highest safety and quality standards. The pursuit of excellence “Made in Germany” – combined with outstanding technical development – is an integral part of our corporate philosophy.



Legal Compliance

Wherever possible, we rely on a modular system design. This allows our customers to replace individual components and to upgrade future parts quickly and cost-effectively as new developments become available.

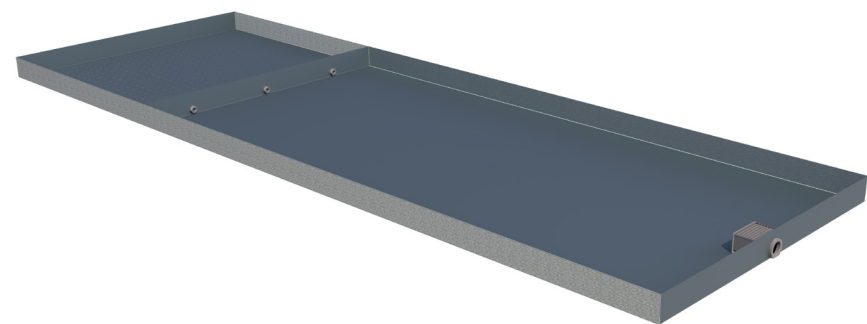
Premium AuRü L



Basic OP/LC

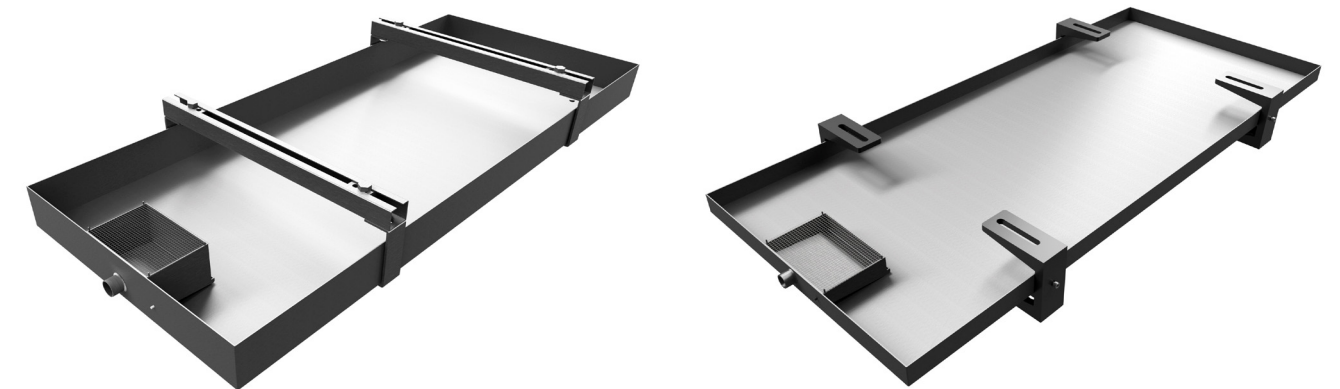
The AuRü L impresses with its large separation system, which allows a higher flow rate. The system enables the outdoor installation of refrigeration units

If light liquids such as ester oil are present in the oil protector, they are retained in accordance with legal requirements by the integrated oil separator. Precipitation water, however, can still drain out of the tray.



The basic oil retention system consists of a 35 mm (OP) or 80 mm (LC) high stainless-steel containment tray with an integrated mechanical separator and four mounting feet. The system enables the outdoor installation of refrigeration units.

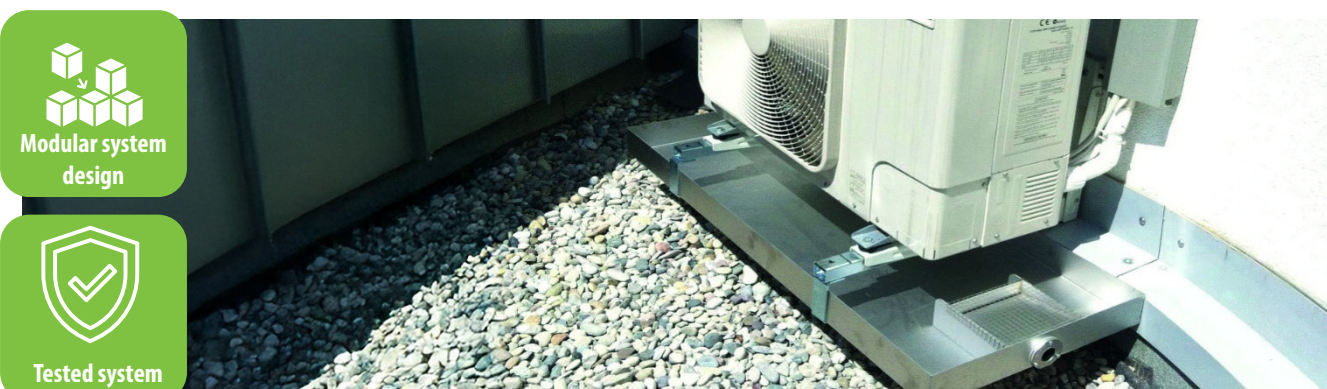
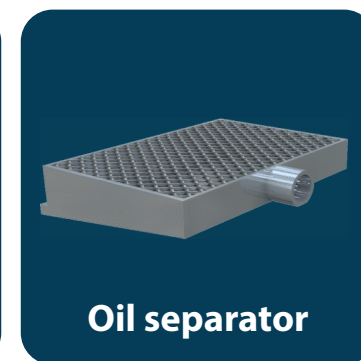
If light liquids such as ester oil are present in the oil protector, they are retained in accordance with legal requirements by the integrated oil separator. Precipitation water, however, can still drain out of the tray.



Scope of delivery



Scope of delivery



The standard sizes have the following specifications:

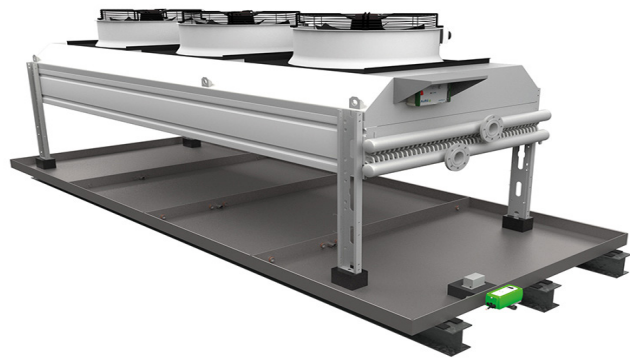
Type	Dimensions (HxWxL)	Retention capacity
AuRü-ÖP-1	35 x 320 x 900 mm	approx. 1,2 litres
AuRü-ÖP-2	35 x 400 x 950 mm	approx. 1,5 litres
AuRü-ÖP-3	35 x 500 x 1150 mm	approx. 2,3 litres
AuRü-ÖP-4	35 x 850 x 1140 mm	approx. 3,8 litres
AuRü-ÖP-5	35 x 930 x 1140 mm	approx. 4,2 litres

Type	Dimensions (HxWxL)	Retention capacity
AuRü-ÖP-6	35 x 780 x 1500 mm	ca. 4,7 litres
AuRü-ÖP-7	35 x 1200 x 1500 mm	ca. 5,4 litres
AuRü-ÖP-8	35 x 850 x 1430 mm	ca. 4,9 litres
AuRü-ÖP-9	35 x 590 x 1250 mm	ca. 3,0 litres
AuRü-ÖP-10	35 x 850 x 1750 mm	ca. 5,0 litres

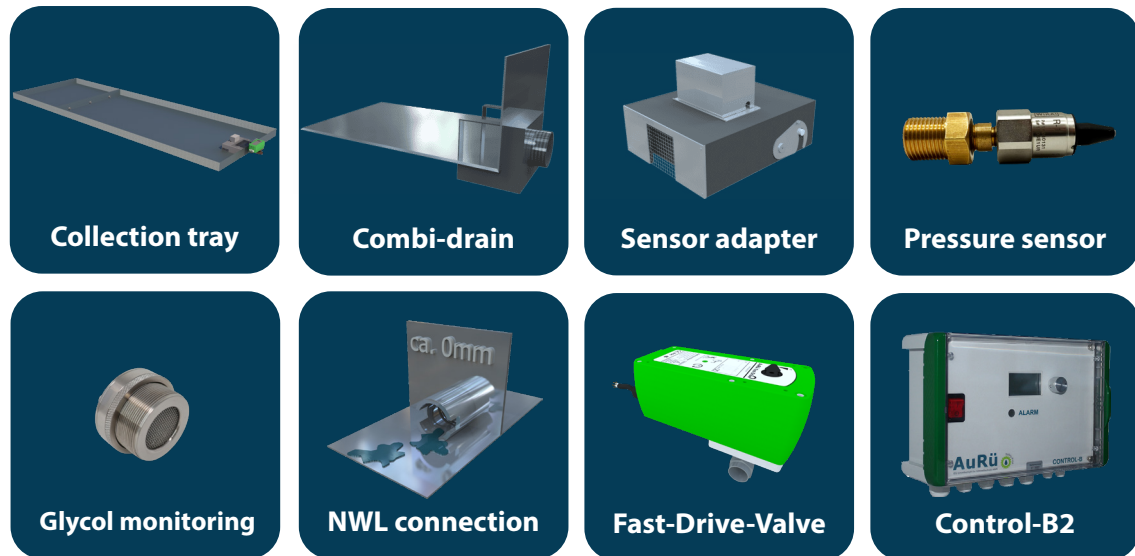
Premium AuRü W

Compared to the basic version AuRü GP, the AuRü W offers additional glycol sensor technology, making it optimally equipped.

At AuRü, legal compliance is our top priority: we always take current legislation into account on your behalf. You can find details on the specific requirements you may face in the future in our section "Legal Regulations."



Scope of delivery



Pressure and glycol detection

No water level

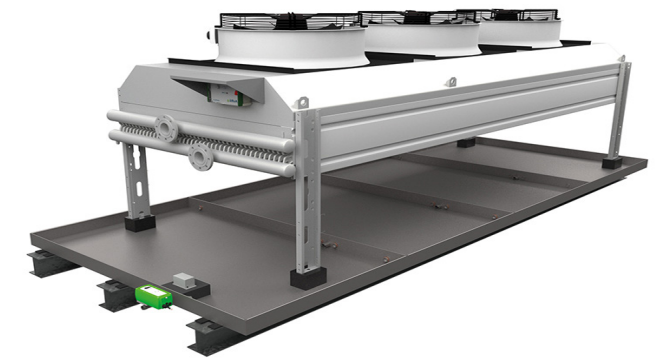
Valve response time – 1 s

Intelligent control

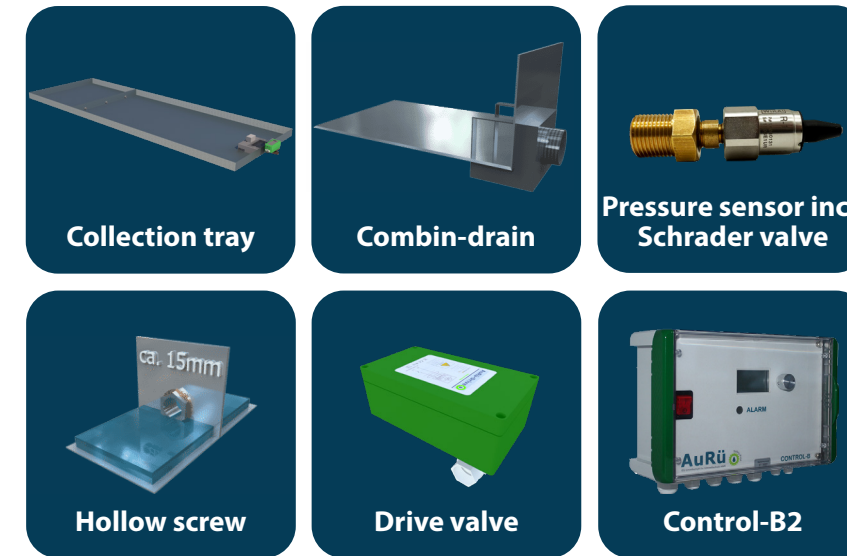
Basic AuRü GP

Our basic glycol containment tray is ideally suited for applications involving cooling or heating systems. With the glycol protector developed by us, we additionally offer an innovative protection system that not only meets but exceeds environmental standards.

The AuRü GP relies on pressure monitoring and is therefore suitable as a retention system for simple water-glycol circuits.



Scope of delivery



Pressure monitoring

Modular system design

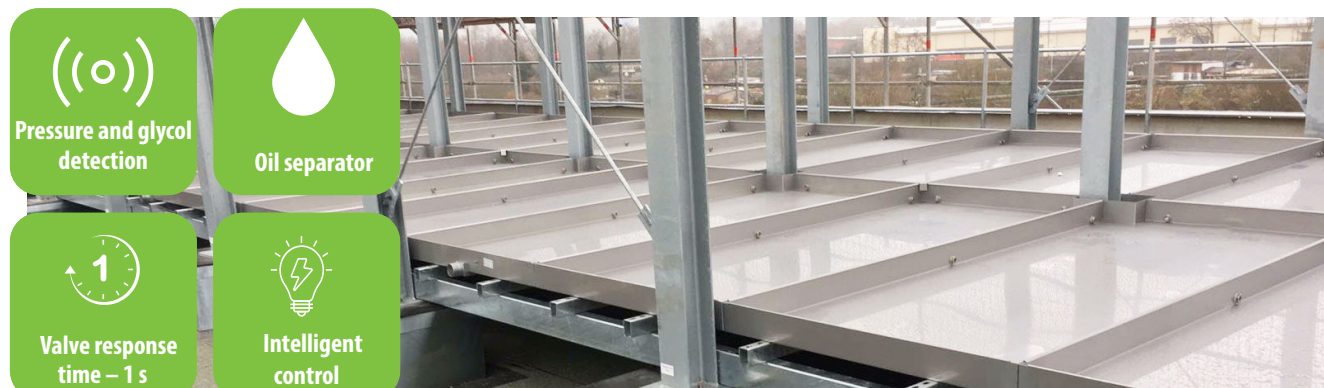
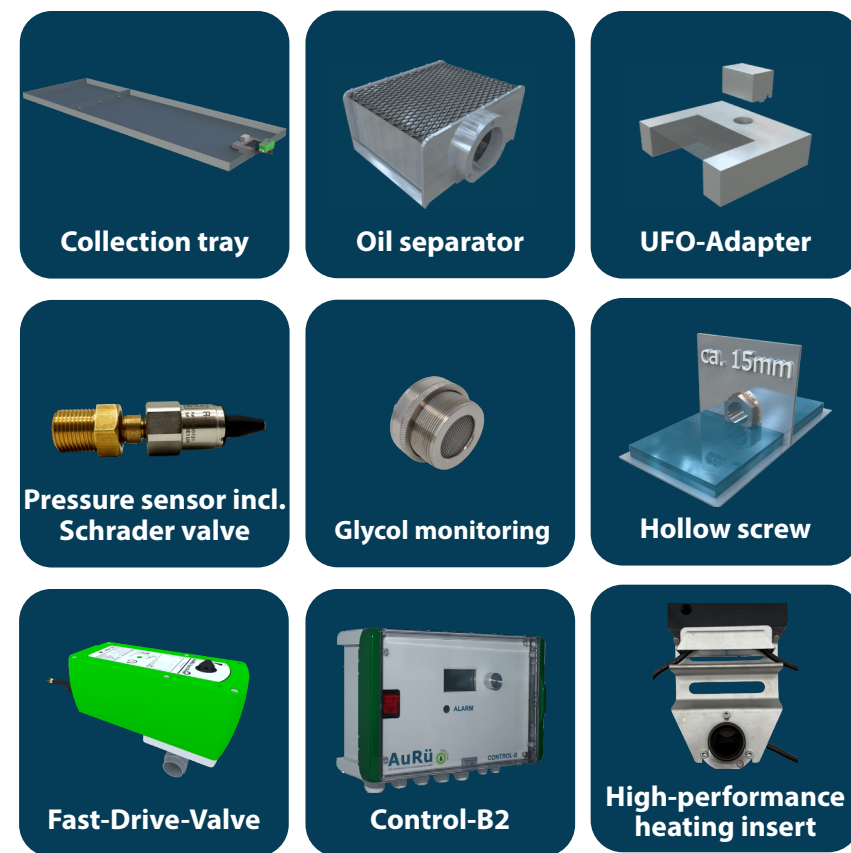
Intelligent control

Premium AuRü LW

The AuRü LW was developed to ensure the highest level of safety in the retention of both oil and glycol. Its innovative counterflow system enables reliable separation and retention of oil, while highly sensitive glycol sensor technology precisely detects even the smallest glycol leaks. A key highlight is the integrated AuRü Fast-Drive valve, which closes within only one second. The AuRü Control-B2 automatically informs the building management system.

This prevents even minimal quantities of glycol from leaving the tray system – ensuring maximum safety in the event of a malfunction.

Lieferumfang

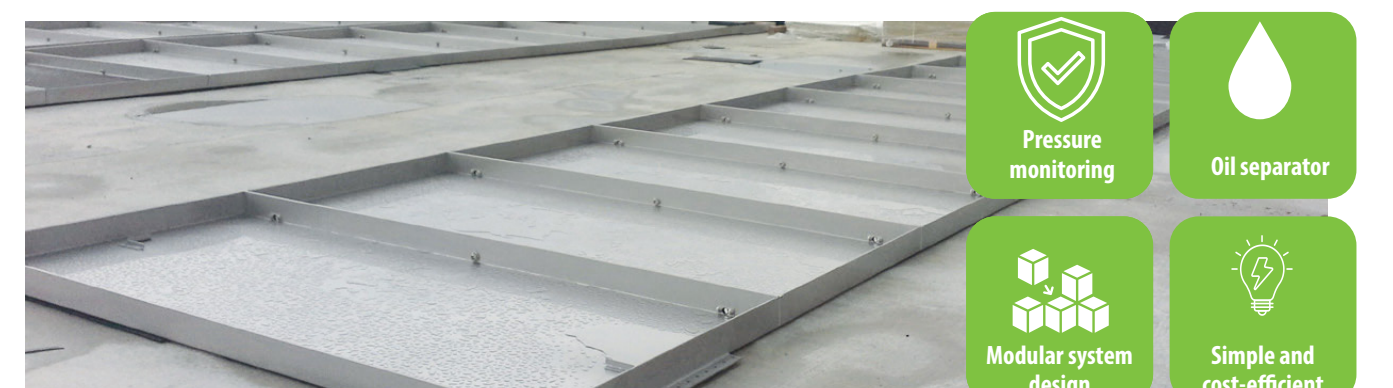
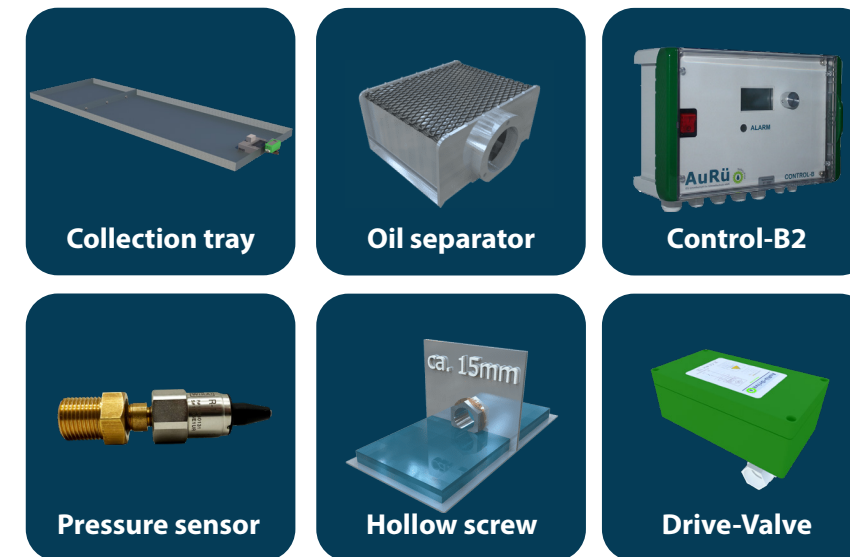


Basic AuRü OGP

The AuRü OGP is a hybrid combination of an oil protector and a glycol protector. The oil separator is able to separate accumulated oil from water, while the integrated electronics reliably detect glycol leaks and retain the water-glycol mixture.

In the event of leak detection, an alarm is automatically transmitted to the building management system (BMS).

Scope of delivery



Sensor Technologies

Glycol-Scanner

Within seconds, even the smallest quantities of glycol can be detected in a medium. Our Glycol Scanner consists of several combined sensor units. All media-contacting components are made of stainless steel DIN 1.4571 as standard.

The desired limit value can be set as a percentage in the electronic control unit. If the limit value is exceeded, an alarm message is transmitted to the building management system, and further measures are initiated depending on the technical configuration.

The measured glycol concentration can be accessed via the control unit's submenu. Thanks to the intelligent control system, the type of glycol used can be selected, ensuring optimal measurement accuracy.

Reliable monitoring of the safety system is ensured by flow monitors as well as temperature and water sensor technology.

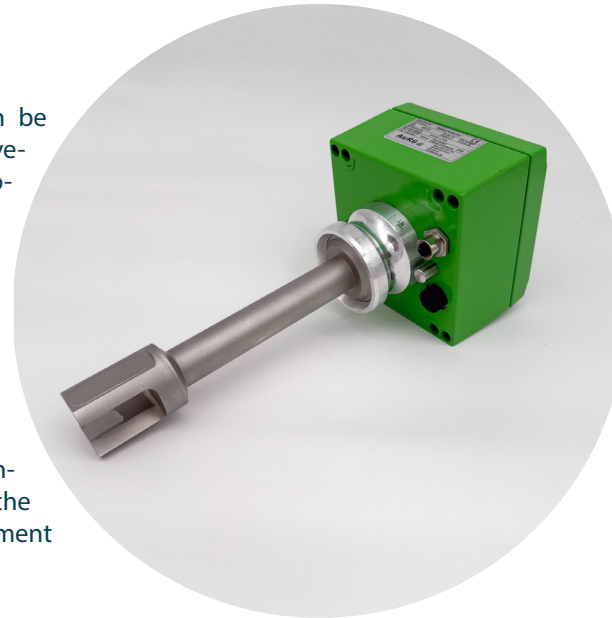
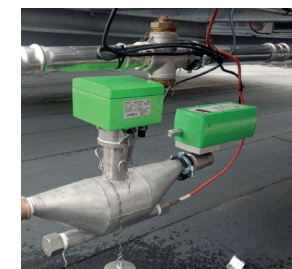
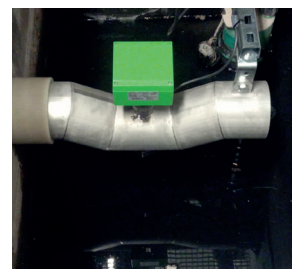
Thanks to individually adaptable adapters, which can be manufactured according to customer requirements, the Glycol Scanner is extremely flexible in its application and can be optimally adapted to a wide range of systems and operating conditions.

Product Benefits

- ✔ Even the smallest quantities of glycol are detected
- ✔ Suitable for use in non-pressurised systems
- ✔ Measurement independent of the water's conductivity
- ✔ Fast response
- ✔ Accurate analysis

Installation in

- ✔ Collection trays
- ✔ Piping systems
- ✔ PE containers
- ✔ Pump sumps
- ✔ Roof drainage systems



Glycol-Sensor

The AuRü Glycol Sensor detects even the smallest glycol particles directly in front of the drain outlet. As soon as the sensor identifies any irregularity, the valves are closed immediately.

Legislation requires that even drip and splash losses must be retained. However, these trace quantities cannot be detected in most cases by standard pressure monitoring, and even larger leaks cannot always be reliably identified through conventional pressure monitoring systems.

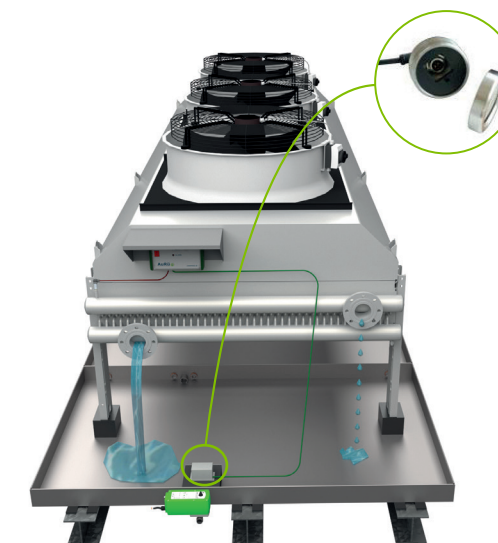
This is due to the fact that in chilled water circuits, constant replenishment maintains a stable pressure. As a result, leaks are usually detected too late by standard pressure monitoring – typically only after the system has already drained. Pressure fluctuations can also frequently lead to false alarms.

Our Glycol Sensor is an autonomous system that ensures continuous monitoring and therefore provides the highest level of protection.



- ✔ Detection of drip and splash glycol losses
- ✔ Resistant to all common refrigerants
- ✔ No inconvenient dyeing of the medium required
- ✔ 5 m cable for easy wiring (extendable)

- ✔ The sensor sensitivity can be calibrated
- ✔ Reported values are displayed in plain text on the screen
- ✔ Shut-off valves of the safety system are closed immediately
- ✔ Automatic notification to the building management system (BMS)



Sensor Technologies

Glycol-Sensor-Contact

The Glycol Sensor Contact detects even the smallest quantities of the medium with precision and reliability. As a result, it is used not only in refrigeration and air-conditioning technology, but also in a wide range of other application areas such as solar technology and the food industry.

In contrast to a conventional pressure sensor, which often cannot reliably detect drip or splash water losses, the Glycol Sensor Contact is capable of detecting even minimal amounts of liquid. The recorded values are transmitted accurately to the switching electronics, enabling early leak detection and ensuring safe system monitoring.

- ✓ Long-term stable measurement
- ✓ All parameters can be configured via CAN bus
- ✓ No poisoning by harmful gases or silicones possible
- ✓ Integrated temperature condensation and frost detection
- ✓ Galvanic isolation between the control circuit and electrodes to prevent grounding loops



Pressure-Sensor

The pressure transmitter monitors the pressure within the system's water-glycol circuit and transmits the measured values to the electronic control unit of the safety and retention system. The pressure sensor is a standard component in the field of leak monitoring.

In the event of a rapidly escaping medium, the device detects the malfunction through the resulting pressure drop.

- ✓ No soldering required
- ✓ Easy to dismantle and replace
- ✓ Ideal for regular maintenance work
- ✓ Suitable for connection to 1/2" threaded sockets using the supplied adapter



Propane Protector

The AuRü Propane Protector was specifically developed for the reliable detection of propane leaks and provides precise and rapid identification of hazardous gas concentrations.

A powerful fan continuously draws samples from the surrounding air in order to accurately measure the concentration of escaping propane gas. Within the integrated ventilation duct, an additional air barrier with a retention chamber temporarily holds the sampled air. This allows leaks to be detected more quickly and with greater precision.

Several intelligently coordinated sensors ensure stable and reliable measurement results – even under typical contamination conditions. This enables long-term stable and low-maintenance operation.

- ✓ Direct air intake from the surrounding environment
- ✓ Easy maintenance through a user-friendly sensor replacement kit
- ✓ Maintenance mode function for uninterrupted testing
- ✓ Customised calibration for the detection of additional gases available upon request
- ✓ Fast and precise detection of propane gas
- ✓ The integrated NDIR sensor is insensitive to contaminants such as silicones, fluorine and sulphur compounds



The electronic control unit not only manages the actuation of valve drives and the output of building management system (BMS) alarms, but also provides a maintenance mode in which alarms are suppressed in order to perform functional tests without interruption.

To ensure long-term functionality, sensor replacement may be required when necessary. A user-friendly replacement kit allows for quick and straightforward exchange, thereby extending the service life of the system with minimal effort.

Optionally, the detection of additional gases is possible through prior calibration – fully tailored to individual requirements.

Connection Technology

AuRü-NWL Connection technology No water level

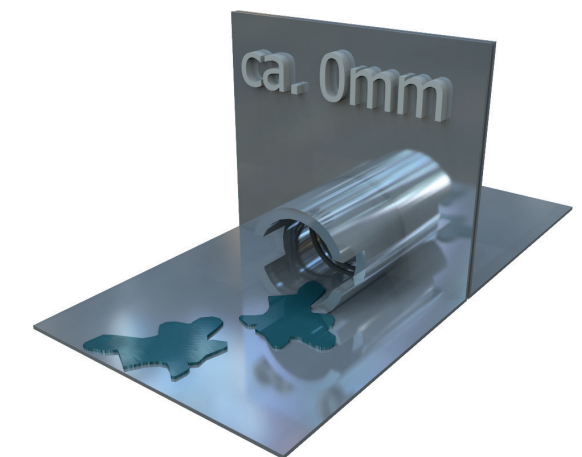
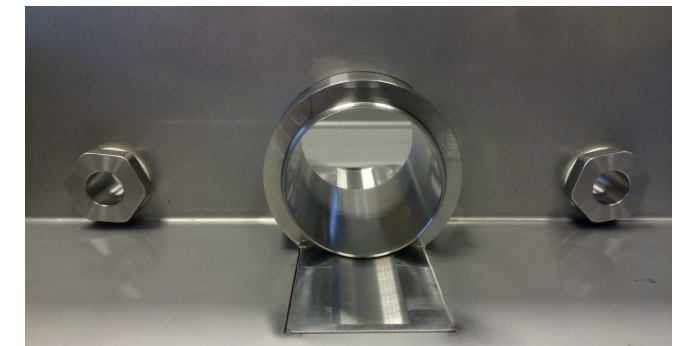
Our standard containment trays are connected to one another using so-called hollow screws. These not only provide additional stability to the overall construction, but also ensure an equalised water level across all connected trays. The introduced medium is evenly distributed through the hollow screws into the adjacent containment trays.

The AuRü-developed NWL connection system ("No Water Level") is designed in such a way that no significant water level can build up inside the containment trays – only isolated small puddles may form within the tray area.

In contrast, conventional hollow screws connections can lead to a water level of approximately 15 mm in the safety and retention systems during rainfall events. Such water accumulations promote the rapid formation of algae as well as the growth of potentially harmful microorganisms such as Legionella.

With the AuRü NWL connection system, the risk of such biological contamination is significantly reduced – ensuring greater hygiene, safety and operational efficiency.

- ✓ Minimisation of the risk of algae and Legionella formation
- ✓ Silicone-free tray connection
- ✓ Easy and quick installation
- ✓ No investment costs for heating required
- ✓ No subsequent heating costs incurred
- ✓ No complex maintenance required
- ✓ No complex piping required
- ✓ Completely leak-tight tray connection



Retrofits

Legally compliant retrofitting with AuRü.

The planning and installation of a system is not only a technical challenge, but also a legal one. The continuously tightening legislation requires the highest level of diligence, as numerous regulations, ordinances and laws at European, federal and state level interact with one another.

In particular, the legally mandated protection of water resources obliges operators to secure systems containing water-hazardous substances accordingly.

Important: Existing systems are not exempt from these regulations.

For a successful official approval process and acceptance by inspection authorities, cooperation with experienced specialists is essential. AuRü specialises in legally compliant retrofit solutions and provides individually tailored safety and retention systems.

Custom-made stainless-steel trays for your existing systems

Whether suspension or recess – we will find a suitable solution tailored to your requirements.

Our retrofits are generally carried out during ongoing operation – ensuring an efficient conversion process without disruption to system



Our solutions for your challenges:

Would you like your system to remain at its current location and continue operating? No problem. We develop customised concepts that, in most cases, enable retrofitting during ongoing operation – without dismantling and without interruption of service.

This means for you: an efficient and cost-effective complete solution.

Measurements are taken directly on site by our experts – ensuring a precise, tailor-made solution that is perfectly adapted to your system.



The solution for heat pumps!

Reliable even at sub-zero temperatures

Heat pumps operate all year round and are therefore particularly susceptible to weather-related challenges. Especially during cold autumn and spring nights, as well as throughout the frosty winter months, condensation water regularly forms beneath the unit. Depending on the device type, this condensate drips into the underlying containment system at one or two points.

Due to direct contact with the stainless-steel base, the condensate freezes immediately: the metal tray rapidly absorbs the low temperatures, causing the liquid droplets to turn into ice instantly. With each additional drop, the ice layer continues to grow – potentially forming a stalagmite-like ice cone. This can not only impair the operation of the system, but may also lead to hazards or damage.

The solution: Surface heating for the containment tray

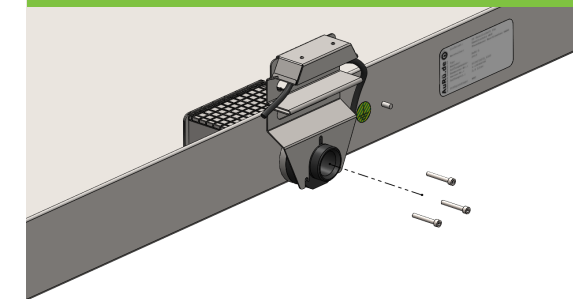
Our innovative surface heating system warms the entire base area of the tray evenly. This effectively prevents ice formation and ensures the safe drainage of condensate. As a result, the heat pump remains fully operational even at very low temperatures – providing operators with maximum operational reliability.

AuRü heating solutions in detail

Depending on the heating system, AuRü heating solutions are installed on, inside or beneath the tray drain outlet. Their energy efficiency is so high that both the entire counterflow system and the surrounding tray are heated optimally.

All heating systems are already equipped with a thermostat, meaning no additional components are required for operation.

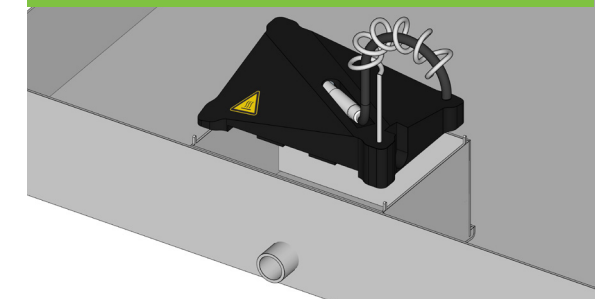
High-performance heating insert



suitable for
AuRü-L, AuRü-LW, AuRü OGP

- ✓ Easy and quick installation
- ✓ Efficient energy use
- ✓ Incl. thermostat

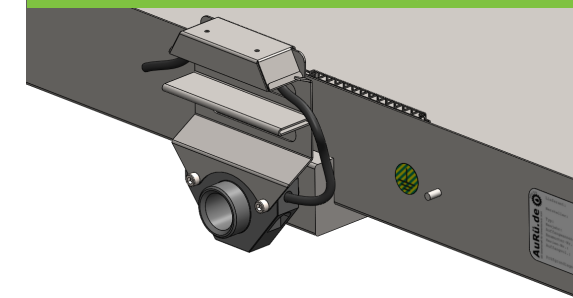
High-performance heating block



suitable for
AuRü-LC, AuRü-OP

- ✓ Easy and quick installation
- ✓ Efficient energy use
- ✓ Incl. thermostat

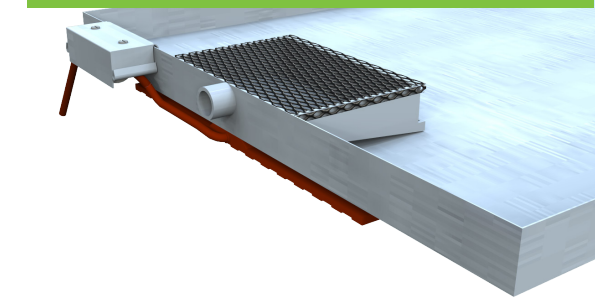
Trapezoidal drain heating system



suitable for
AuRü-W, AuRü-GP

- ✓ Easy and quick installation
- ✓ Efficient energy use
- ✓ Incl. thermostat

Heating mat with thermostat



suitable for
alle collection trays

- ✓ Cost-effective

Customised mounting solutions

AuRü mounting systems for air-conditioning units and heat pumps stand out thanks to an intelligent and modular system design. Our mounting solutions consist of components that are engineered to adapt flexibly to a wide range of requirements and site conditions.

Whether flat roofs, pitched roofs, uneven surfaces or vibration-sensitive environments – we provide the right solution for every installation scenario. Thanks to the well-thought-out system design, project-specific adjustments can be implemented efficiently and without significant additional effort.

This results in a durable, stable and secure installation of your HVAC equipment at any location.

Big Foot

With AuRü, everything remains stable – and safe.

The Big Foot mounting system has already proven itself as a reliable solution in numerous projects. We are now placing even greater emphasis on it in combination with our perfectly matching containment trays – as a well-designed complete system for the safe, clean and standards-compliant installation of technical equipment.

Whether refrigeration, air-conditioning or ventilation units, piping systems or heavy HVAC assemblies – with the Big Foot mounting system and our customised containment trays, you benefit from stability, roof protection and environmental protection – all from a single source.

- ✔ Tilt and wind load calculation
- ✔ Easily extendable
- ✔ Installation without drilling – no roof penetration
- ✔ Cost-efficient solution
- ✔ Individually removable feet – easy access to the roof surface without dismantling
- ✔ Adaptation to roof pitch possible
- ✔ Space-saving, flat packaging for easy transport
- ✔ Robust, hot-dip galvanised support system
- ✔ Gentle load distribution thanks to damping mats

Each foot is height-adjustable – ideal for compensating roof unevenness

One system – many possibilities

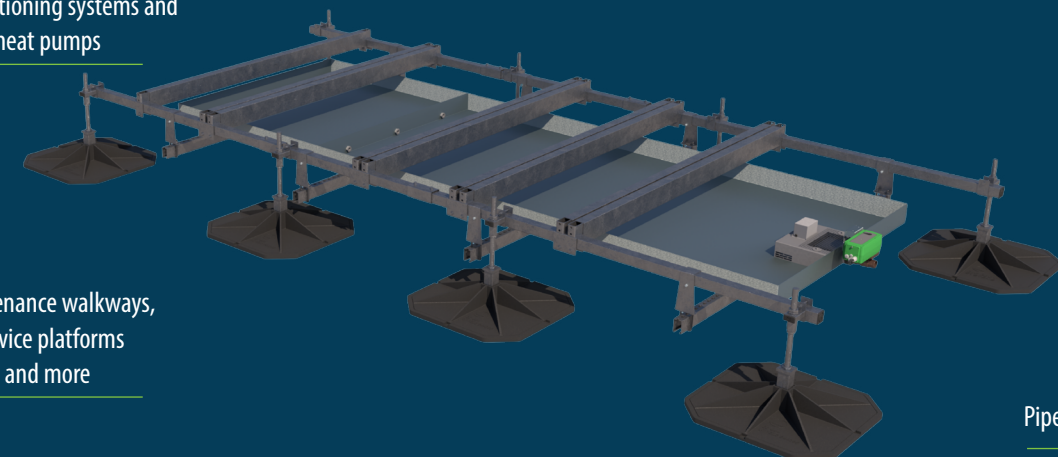
Outdoor units for air-conditioning systems and heat pumps

Generators, refrigeration units and heavy equipment

Maintenance walkways, service platforms and more

Air handling units, fans and air ducts

Pipe and cable trays



Big Foot Standard Frame

Rubber base

Big Foot Standard Frame

Big Foot Systems standard frames are made of robust 40 × 40 mm square steel tubing and are available in lengths from 1 m to 4 m, as well as widths of 1.2 m or 1.5 m.

The modular system with 305 mm or 450 mm support feet is ideally suited for non-penetrating rooftop installations. It is easy to assemble, flexibly configurable, and provides high stability against tipping and slipping under wind loads of up to 100 mph.



✓ Easy and quick installation – reduces installation time and effort



✓ Optimal weight distribution – for maximum stability and safety



✓ Expandable solution – optionally available with the AuRü tray mounting set

✓ Durable construction – hot-dip galvanised support system for corrosion protection

✓ Gentle load distribution – integrated damping mats on each foot

Product	Height mm	Length mm	Width mm	Maximale load (kg)	Weight kg
1m x 1.2m Standard Frame	290 - 400	1000	1200	500	39
2m x 1.2m Standard Frame	290 - 400	2000	1200	1000	67
3m x 1.2m Standard Frame	290 - 400	3000	1200	1500	97

The user-friendly mounting system

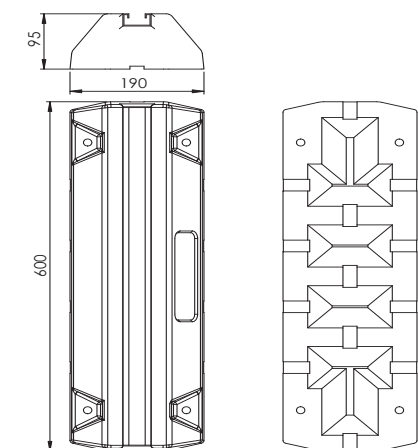
The vibration damping base enables the easy and secure installation of outdoor units – completely without drilling. The anti-vibration foot made of soft SBR rubber ensures optimal stability and effective vibration damping thanks to its wide contact surface, while the integrated central rail made of high-quality aluminium provides gentle load distribution.

It is ideal for air-conditioning systems, heat pumps, ventilation units and ducts, as well as piping installations.



- ✓ Material: Support made of recycled SBR rubber
- ✓ Colour: Black
- ✓ Temperature range: -40°C to +80°C
- ✓ Surface: UV-resistant aluminium profile (41 × 21 mm), integrated into the damper

*Drawing based on the AuRü Rubber base 600



Length mm	Height mm	Width mm	Aluminium rail L mm	Weight kg	Load capacity kg
250	95	190	218	2,5	120
400	95	190	378	4,0	180
600	95	190	578	6,0	275
1000	95	190	978	10,0	455

Custom-made acoustic housings for heat pumps, refrigeration and air-conditioning systems!

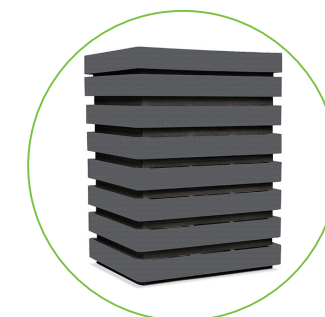
Our high-quality acoustic housings from Solflex provide a reliable solution for reducing noise emissions from heat pumps, refrigeration and air-conditioning systems. We distinguish between fully enclosed sound insulation enclosures and partially enclosed noise protection housings, ensuring that you can find the right option for every situation.

Noise generated by technical equipment can not only disturb the surrounding environment, but may also violate legal requirements. With our housings, you can effectively reduce sound levels and ensure that your system can be operated in full compliance with regulations.

Depending on the installation location and structural conditions, we offer individually tailored solutions – ranging from standard models to custom-designed special constructions.

Our solutions at a glance:

- ✓ Effective noise reduction
- ✓ Flexible for new installations and retrofits
- ✓ Horizontal and vertical air discharge
- ✓ Tailored to your specific requirements
- ✓ Robust and providing additional protection against weather conditions, vandalism and mechanical impact



HD 6 dB (A)



HT 12 dB (A)



HM 13 dB (A)



SHT 18 dB (A)



Legal Compliance

Responsible handling of water-hazardous substances – our contribution to environmental protection

The responsible handling of water-hazardous substances is not a “nice-to-have” – it is a legal obligation. Particularly in refrigeration and air-conditioning systems, significant environmental risks are often hidden: the ester oils used may initially appear harmless (WGK 1 or 2), but after the first operating cycle they mix with the refrigerant and become highly hazardous substances classified as WGK 3.

Used oils and lubricants also fall into the highest hazard category and must never be left unsecured. Proper retention and disposal are not only legally required (keyword: AwSV), but also represent active environmental protection. As a general principle, all water hazard classes must be retained.

More than just stainless-steel trays – we provide complete solutions for environmental protection

For more than 15 years, AuRü has been fully committed to reliably protecting water and soil from harmful substances. However, one thing is clear: a simple containment tray alone is not sufficient.

We provide intelligent systems – individually planned and precisely tailored.

Our safety and retention systems consist of far more than the classic stainless-steel containment tray.

The focus is not only on our counterflow systems for oil retention, but also on our highly advanced sensor solutions for glycol detection – powerful, versatile and absolutely reliable. Whether in combination with our oil and glycol protectors or in complex environments such as pump sumps, piping systems or wastewater shafts, our technology detects issues at an early stage and prevents environmental damage before it occurs.

Our customised systems are developed according to a modular system design – always tailored to your specific requirements. We place particular emphasis on maintenance-free or low-maintenance concepts that comply fully with legal requirements under WHG and AwSV.

Individual, well-engineered and focused on what truly matters: protecting our environment.



Retention



Monitoring



Detection

Our training programmes for you and your team!

Gain a solid understanding of the legal regulations applicable to your systems. We provide practical information and up-to-date developments to ensure the optimal training of your employees.

Simply schedule an appointment at: <https://www.aurue.de/schulung-rechtssicherheit/>



German Water Resources Act (WHG): Current legislation in Germany and what you need to be aware of.

§ 5 General duty of care

(1) Every person is obliged, when carrying out measures that may have an impact on a body of water, to exercise the level of care required under the circumstances in order to avoid any adverse alteration of the water's characteristics.

§ 62 Requirements for handling water-hazardous substances (so-called precautionary principle), paragraph 1

Systems for handling water-hazardous substances in the commercial sector as well as in public institutions must, as a general principle, be designed, installed, set up and operated in such a way that water pollution is not to be expected.

No exemption thresholds apply!

Ordinance on Facilities for Handling Water-Hazardous Substances (AwSV): An overview for you.

According to §1 AwSV, the ordinance does not apply to:

Above-ground installations outside protected areas and provisionally secured flood zones

- with less than 220 litres of liquid substances
- with less than 200 kg of gaseous substances

§ 62 paragraphs 1 and 2 of the WHG remain unaffected.

§ 17 AwSV – Basic requirements

(1) “Facilities must be planned, constructed, designed and operated in such a way that:

1. water-hazardous substances cannot escape,
2. leakages in all parts of the facility that come into contact with water-hazardous substances can be detected quickly and reliably,
3. escaping water-hazardous substances are detected and retained quickly and reliably and are disposed of properly; this also applies to operationally caused spray and drip losses, and
4. in the event of a disturbance of normal operation of the facility (operational malfunction), any mixtures that may contain escaped water-hazardous substances are retained and properly disposed of as waste or discharged as wastewater...”

§ 18 AwSV – Requirements for retention

(1) Facilities must retain escaped water-hazardous substances in an appropriate manner. For this purpose, they must be equipped with a retention device within the meaning of § 2 paragraph 16. Sentence 2 does not apply if the facility is double-walled within the meaning of § 2 paragraph 17.

Individual parts of a facility may be provided with different retention devices, each independent of one another. In facilities that are only partially equipped with double walls, single-walled components must be fitted with a retention device.

(2) Retention devices must be impermeable to liquids and must not have any drains. Construction designs are considered liquid-impermeable if they do not lose their sealing and load-bearing function for the duration of exposure to the water-hazardous substances handled within the facility.

§ 19 AwSV – Requirements for drainage

(4) Rainwater from surfaces on which cooling units of refrigeration systems using ethylene or propylene glycol are installed outdoors must be discharged into a foul water or combined sewer. Water law requirements regarding discharge as well as local discharge conditions remain unaffected.

§ 35 AwSV – Special requirements for geothermal probes and collectors, solar collectors and refrigeration systems

(3) "Outdoor solar collectors and refrigeration systems containing liquid water-hazardous substances do not require retention if:

1. they are secured by automatic monitoring and safety devices in such a way that, in the event of a leak, the circulation pumps are immediately switched off and an alarm is triggered,
- 2- they use only the following substances or mixtures as heat transfer media:
 - a) non-water-hazardous substances, or
 - b) mixtures classified as Water Hazard Class 1, whose main components are ethylene or propylene glycol, and
3. the cooling units are installed on a sealed surface."

Rainfall contribution

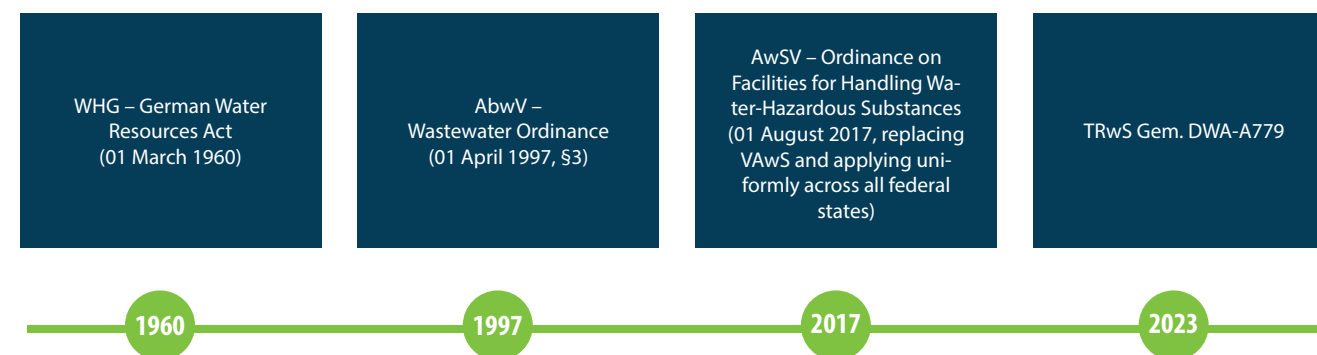
Rainfall contribution describes the amount of rain acting on a surface – an important factor for the design of retention basins, wastewater systems or safety and retention systems.

Regulated in: Technical Rule for Water-Hazardous Substances (TRwS) in accordance with DWA-A 779 (German Association for Water, Wastewater and Waste).

Until June 2023: A flat-rate value of 50 litres per square metre applied.

Since June 2023: A more differentiated calculation is possible – with suitable safety measures (e.g. pumps, backflow preventers), the assessment period may be reduced to 15 minutes.

The most important legal requirements for securing facilities handling water-hazardous substances (1960 to today)



Wastewater Ordinance (AbwV): Proper disposal and possible consequences.

Wastewater Ordinance (AbwV) – § 3 General requirements, paragraphs 1 and 3

(1) Unless otherwise specified in the annexes, wastewater may only be discharged into a body of water if the pollutant load is kept as low as possible, as determined by an assessment of the circumstances in each individual case.

(3) Requirements defined as concentration values must not be achieved by dilution in a manner contrary to the state of the art.

Uncontrolled discharge of water-hazardous substances is not permitted. After detection and retention, controlled discharge into the wastewater or foul water sewer is permitted only after consultation with and approval by the responsible authority.

May used coolants be disposed of via the sewer system?

Discharging used coolants into the sewer system constitutes a violation of the applicable Circular Economy Act and may result in criminal prosecution.

- Used coolants must be handed over to a locally authorised disposal company. In addition to water, used coolants contain glycols and chemical substances that may, under certain circumstances, be classified as hazardous materials.
- If coolants have been in use for an extended period, they are often contaminated with chemical and thermal degradation products. According to the applicable Waste Catalogue Ordinance, used coolants are therefore assigned the waste codes 160114 or 160115.

What happens in the event of damage?

- Polluter pays principle – the operator is liable for all damage caused (ecological compensation).
- Failure to comply with the WHG may result in a fine of up to €50,000.
- Insurance coverage applies in the event of damage only if the system has been installed and operated in accordance with legal requirements.
- Official approvals do not protect against penalties.
- The operator has the right to assert recourse claims against third parties.
- Environmental Damage Act
- Environmental Liability Act

1. Primary safety

General safety, suitability and reliability of all system components under all loads and external influences

3. Tertiary safety

Internal and external monitoring

2. Secondary safety

Multiple safety levels, redundant technical protective measures

4. Quaternary safety

Corrective measures – options and prospects of success in the event of damage (emergency plan)

AuRü

safety and retention systems



GS Gesellschaft für Umweltschutz mbH

Technikerstraße 12
48465 Schüttorf

Tel +49 5923 800 95 00
E-Mail info@aurue.de
Website www.aurue.de

